

BALANCE keyboard

Product Manual



Box content

1. Balance Keyboard
2. Dongle (wireless receiver)
3. USB Extender Cable
4. Two AAA Batteries
5. User Guide



Function and Media Control Keys

- A. Media Control Functions
- B. Application Functions
- C. Interface Functions
- D. Fn Keys*
- E. Risers
- F. Battery compartment and dongle storage
- G. Power Button**

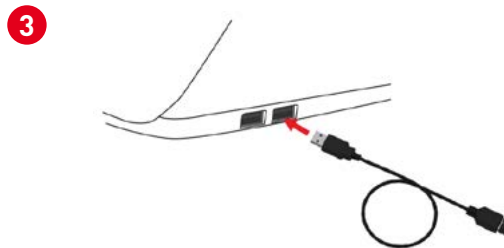
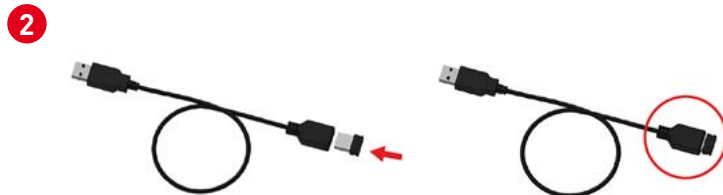
* The Fn key toggles between function [1-12] and media modes. By default the media keys are active.

** Removing the tab from the battery compartment will power on the device for the first time. Turning off the device is only necessary for long-term storage or travel.



Start using your keyboard

- 1** Pull the tab from the battery compartment and remove the dongle from the undersides of the keyboard.
- 2** Attach the dongle to the extender cable.
- 3** Plug the extender cable into your computer's USB port.



Keyboard Tilt

The adjustable legs on the Balance Keyboard have three tilt options:

Positive tilt

Netural tilt

Negative tilt



Positive tilt



Netural tilt



Negative tilt

Keyboard Shortcuts - Power Button

The power button turns the Balance Keyboard ON/OFF.

When powering the Balance Keyboard ON, the LEDs on the left side of the keyboard will flash from BOTTOM to TOP. When powering OFF, the LEDs will flash from TOP to BOTTOM.

When OFF, pressing keys will not power ON the keyboard. Only the power button turns it ON again.



Keyboard Shortcuts - PC Mode & Mac Mode

By default, the Balance Keyboard is in PC mode.

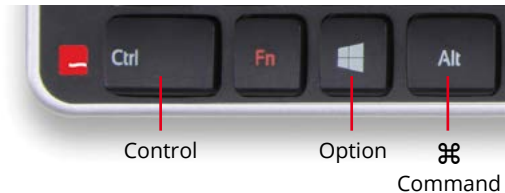
Hold the Windows key and press the power button once to toggle.

Mac mode – LED lights flash from TOP to BOTTOM

PC mode – LED lights flash from BOTTOM to TOP



Mac Keys:



Keyboard Shortcuts - Pairing Mode

Ctrl + Power buttons starts pairing mode and clears any existing dongle connections.

Balance Keyboard comes with a dongle that has already been paired. If for any reason your Balance Keyboard and dongle become unpaired, use the following instructions to pair your Balance Keyboard to its dongle again.

Hold Control and press Power once to pair keyboard and dongle.

Note: Please hold the Power button as close to the wireless receiver as possible during pairing.



Keyboard Shortcuts - Function

Fn + Power buttons toggles between function mode (F1-F12) and media mode as the default setting.

By default, Balance Keyboard comes with function mode set to OFF.

To activate function mode, press the Fn key.

To change the default setting of function mode to ON, press and hold Fn and press the Power button once.



Get in touch

Keyboard Specialists Ltd

Unit 44-45, Darlaston Central

Trading Estate

Salisbury Street

Wednesbury

West Midlands

WS10 8XB

United Kingdom

Tel: +44 (0) 20 3474 0234

Fax: +44 (0) 20 3474 0235

Tested to comply with FCC
and IC standards.



KBS | Keyboard
Specialists

FCC Statement

Changes or modifications not expressly approved by the party responsible for compliance could void the user's authority to operate the equipment.

This equipment has been tested and found to comply with the limits for a Class B digital device, pursuant to Part 15 of the FCC Rules. These limits are designed to provide reasonable protection against harmful interference in a residential installation. This equipment generates uses and can radiate radio frequency energy and, if not installed and used in accordance with the instructions, may cause harmful interference to radio communications. However, there is no guarantee that interference will not occur in a particular installation. If this equipment does cause harmful interference to radio or television reception, which can be determined by turning the equipment off and on, the user is encouraged to try to correct the interference by one or more of the following measures:

- Reorient or relocate the receiving antenna.
- Increase the separation between the equipment and receiver.
- Connect the equipment into an outlet on a circuit different from that to which the receiver is connected.
- Consult the dealer or an experienced radio/TV technician for help.

This device complies with part 15 of the FCC rules. Operation is subject to the following two conditions (1) this device may not cause harmful interference, and (2) this device must accept any interference received, including interference that may cause undesired operation.

IC Statement

This device complies with Industry Canada's licence-exempt RSSs. Operation is subject to the following two conditions:

- (1) This device may not cause interference; and
- (2) This device must accept any interference, including interference that may cause undesired operation of the device.

The term "IC: " before the certification/registration number only signifies that the Industry Canada technical specifications were met. This product meets the applicable Industry Canada technical specifications.

Le présent appareil est conforme aux CNR d'Industrie Canada applicable aux appareils radio exempts de licence. L'exploitation est autorisée aux deux conditions suivantes : (1) l'appareil ne doit pas produire de brouillage, et (2) l'utilisateur de l'appareil doit accepter tout brouillage radioélectrique subi, même si le brouillage est susceptible d'en compromettre le fonctionnement

Warranty

If there is a functional defect due to faulty manufacturing, we will replace the product. This warranty does not cover damage that results from misuse of the product.

Attention!

If you attempt to dismantle your RollerMouse, you will invalidate your warranty.

contour