

# RollerMouse Free3

## *Wireless*

### Product Manual



## Box Contents

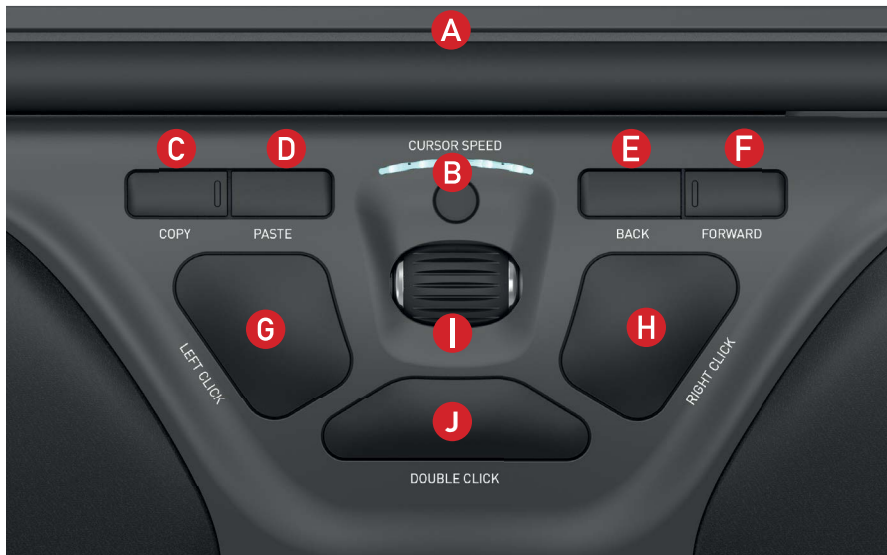
1. RollerMouse Free3 Wireless
2. Two short keyboard risers
3. Two long keyboard risers
4. Dongle (Wireless receiver)
5. USB extender
6. Charging cable



## RollerMouse Functions

- A. Rollerbar
- B. Cursor speed/Battery level indicator (LED)
- C. Copy
- D. Paste
- E. Back
- F. Forward
- G. Left-click
- H. Right-click
- I. Scroll wheel
- J. "One Touch" double-click

For additional mouse features and specific Mac settings, please download our driver at [support.contour-design.co.uk](http://support.contour-design.co.uk)



## Keyboard Positioning

Before plugging in the unit, take a moment to check the height and angle of your keyboard, and find the arrangement that's most comfortable for you. Use the risers to achieve the correct angle and height regardless of the type of keyboard you are using. The spacebar on your keyboard should come just above your rollerbar. To achieve a proper ergonomic position, the front edge of the keyboard should be as close to the rollerbar.

Contour Design's Balance Keyboard is a perfect option for the Free3 Wireless. Designed specifically for the RollerMouse, the Balance Keyboard sits level with the rollerbar and can be easily adjusted to a positive, neutral, or negative tilt.



**Positive Tilt**



**Negative Tilt**



**Neutral Tilt**

## Inserting the Keyboard Risers

Fit the end of the riser **2** into the slot on the back of the RollerMouse Free3 Wireless.



Line up the short and long risers **2** and **3** then press the two parts together until you hear them snap into place.



## Adjusting the Keyboard Risers



**Negative Tilt**



**Neutral Elevated**



**Positive Tilt**



**Neutral Flat**

## Power Switch

The power switch can be found on the underside of the Free3 Wireless. Make sure the power switch is set to ON before pairing with your computer.



The Free3 Wireless features an optimized power management. Turning off the device is only necessary for permanent storage or during travel.

## Connecting to a Computer

Plug the wireless receiver **4** or the charging cable **6** into the computer's USB port. Allow your computer a few seconds to automatically install.



## USB 2.0 cable adapter

This cable **5** provides a stronger connectivity\* for wireless 2.0 USB devices when connected to USB 3.0 hubs.

If you find the reception of the device is not optimal, please use the included USB cable adapter for your convenience.



## Using the Rollerbar

The rollerbar **A** provides two functions:

- Cursor movement is performed by moving the rollerbar from side to side, and up and down.
- Left click is performed by pressing down on the rollerbar.



## Click Force Tension Adjustment

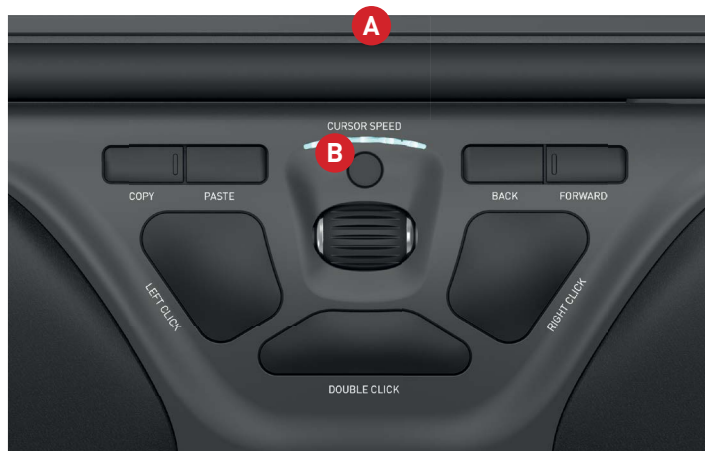
For optimal control, you can adjust the amount of pressure required to perform a mouse click. Use the click force tension slider located under your RollerMouse Free3 Wireless. Simply slide it until you find the click control that works best for you.



## Turn Bar-Click ON/OFF

To turn off the click functionality in the rollerbar, hold down Cursor Speed **B** button, and press the rollerbar **A**.

Repeating this process will re-activate the click functionality in the rollerbar.



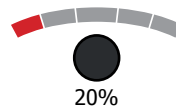
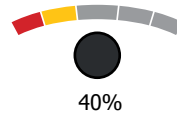
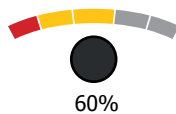
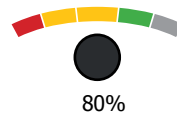
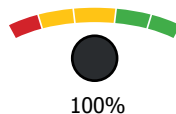
## Battery Level

Your RollerMouse Free3 comes pre-charged and has an expected battery life of up to 3 months with average daily use.\*

RollerMouse Free3 has a built-in rechargeable battery. To see the battery level on your device, press the cursor speed button once. The RollerMouse will first display the current cursor speed (DPI), then display the current battery level. If your RollerMouse Red is running low on battery, the center LED light will start blinking red.

To charge your battery, plug the charging cable into your RollerMouse Free 3 and connect it to a USB port on your computer (see page 5). The RollerMouse Free 3 will charge in 2 hours and you may use your RollerMouse Red as it charges.

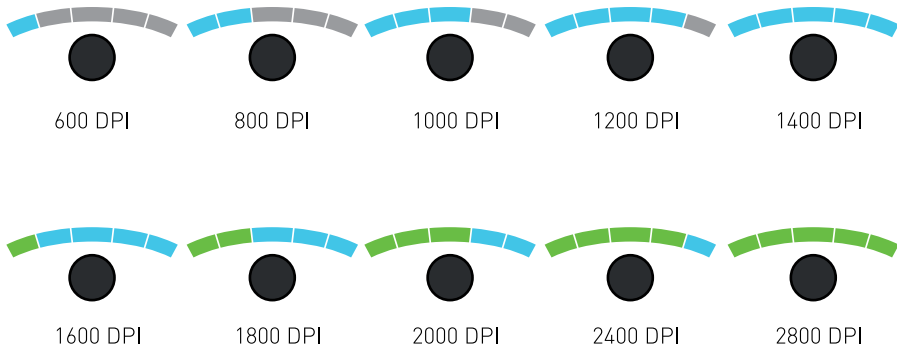
\*Battery life may vary based on user and computing conditions.



## Change Cursor Speed

Press the Cursor Speed **B** button to cycle through cursor speeds. There are ten speed selections which range from slow (600 DPI) to fast (2800 DPI). Speed can be identified by the LED lights as shown.

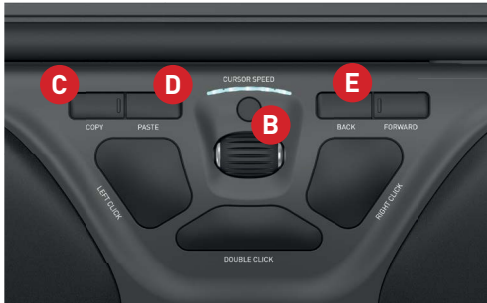
To see the current DPI level, press the Cursor Speed **B** button once.



## Operating System

RollerMouse Free3 Wireless has 3 modes. PC- mode , Mac-mode and HID-mode. Use the following key commands to switch settings to best fit your operating system.

- B** + **C** : PC Mode (Hold down the Cursor Speed and press Copy)
- B** + **D** : Mac Mode (Hold down the Cursor Speed and press Paste)
- B** + **E** : HID Mode (Hold down the Cursor Speed and press Back)



## Different Mode Settings

<b>PC - Mode</b>	LED's light up from left to right	Window
<b>MAC - Mode</b>	LED's light up from right to left	OS
<b>HID - Mode</b>	LED's light up from both sides towards the middle	Linux

## Changing the 'Double' click button to 'Middle' button function

To change double click button **B** to function as a middle click, hold buttons **B** and **J** for two seconds until LED lights flash to confirm. Repeating this process will revert back to double click functionality.



## Pairing

With the RollerMouse Free 3 in close proximity to the dongle, hold the cursor speed button **B** and press the left click **G** and right click **H** buttons at the same time until the LED indicator turns green and pulses twice in succession.



## Get in touch

### Keyboard Specialists Ltd

Unit 44-45, Darlaston Central

Trading Estate

Salisbury Street

Wednesbury

West Midlands

WS10 8XB

United Kingdom

Tel: +44 (0) 20 3474 0234

Fax: +44 (0) 20 3474 0235

Tested to comply with FCC  
and IC standards



**KBS** | Keyboard  
Specialists

### FCC Statement

Changes or modifications not expressly approved by the party responsible for compliance could void the user's authority to operate the equipment.

This equipment has been tested and found to comply with the limits for a Class B digital device, pursuant to Part 15 of the FCC Rules. These limits are designed to provide reasonable protection against harmful interference in a residential installation. This equipment generates uses and can radiate radio frequency energy and, if not installed and used in accordance with the instructions, may cause harmful interference to radio communications. However, there is no guarantee that interference will not occur in a particular installation. If this equipment does cause harmful interference to radio or television reception, which can be determined by turning the equipment off and on, the user is encouraged to try to correct the interference by one or more of the following measures:

- Reorient or relocate the receiving antenna.
- Increase the separation between the equipment and receiver.
- Connect the equipment into an outlet on a circuit different from that to which the receiver is connected.
- Consult the dealer or an experienced radio/TV technician for help.

This device complies with part 15 of the FCC rules. Operation is subject to the following two conditions (1) this device may not cause harmful interference, and (2) this device must accept any interference received, including interference that may cause undesired operation.

### IC Statement

This device complies with Industry Canada's licence-exempt RSSs. Operation is subject to the following two conditions:

- (1) This device may not cause interference; and
- (2) This device must accept any interference, including interference that may cause undesired operation of the device.

The term "IC: " before the certification/registration number only signifies that the Industry Canada technical specifications were met. This product meets the applicable Industry Canada technical specifications.

Le présent appareil est conforme aux CNR d'Industrie Canada applicable aux appareils radio exempts de licence. L'exploitation est autorisée aux deux conditions suivantes : (1) l'appareil ne doit pas produire de brouillage, et (2) l'utilisateur de l'appareil doit accepter tout brouillage radioélectrique subi, même si le brouillage est susceptible d'en compromettre le fonctionnement

### Warranty

If there is a functional defect due to faulty manufacturing, we will replace the product. This warranty does not cover damage that results from misuse of the product.

### Attention!

If you attempt to dismantle your RollerMouse, you will invalidate your warranty.

contour 