

RollerMouse Pro3

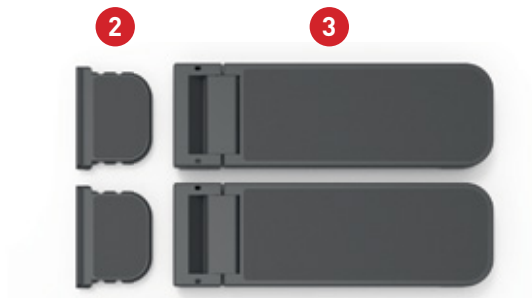
User Guide



contour 

Box contents

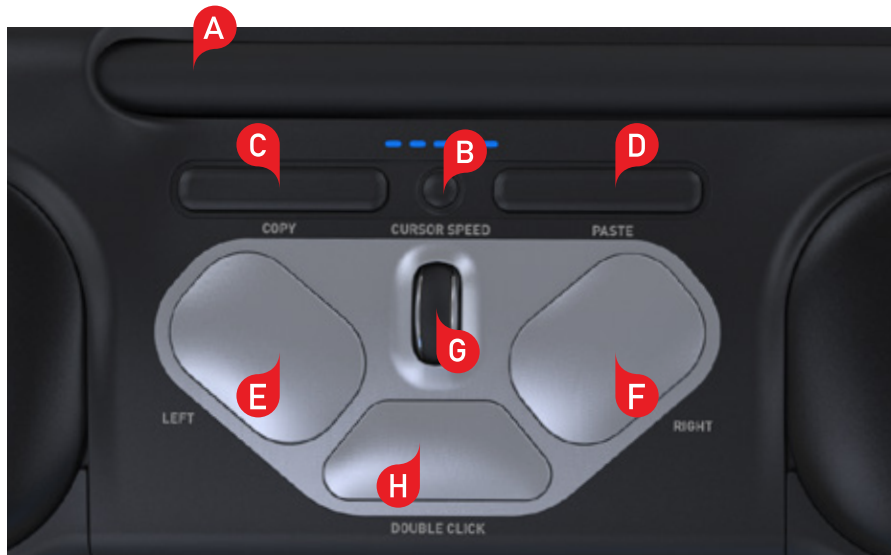
1. RollerMouse Pro3
2. Two short keyboard risers
3. Two long keyboard risers



RollerMouse functions

- A. Rollerbar
- B. Cursor speed LED
- C. Copy
- D. Paste
- E. Left-click
- F. Right-click
- G. Scroll wheel
- H. "One Touch" double-click

For additional mouse features and specific Mac settings, please download our driver at www.contour-design.co.uk.



Keyboard positioning

Before plugging in the unit, take a moment to check the height and angle of your keyboard, and find the arrangement that's most comfortable for you. Use the risers to achieve the correct angle and height regardless of the type of keyboard you are using. The spacebar on your keyboard should come just above your rollerbar. To achieve a proper ergonomic position, the front edge of the keyboard should be as close to the rollerbar.

Balance Keyboard is designed specifically for the RollerMouse. The keyboard sits level with the rollerbar and can be easily adjusted to a positive, neutral, or negative tilt.



Positive tilt



Negative tilt



Neutral tilt

Inserting the keyboard risers

Fit the end of the riser **2** into the slot on the back of the RollerMouse Pro3.



Adjusting the keyboard risers

Line up the grooves of the short and long risers **2** and **3** then press the two parts together until you hear them snap into place.



Connecting to a computer

Plug the RollerMouse Pro3 USB cable into the computer's USB port. Allow your computer a few seconds to automatically install.



Using the rollerbar

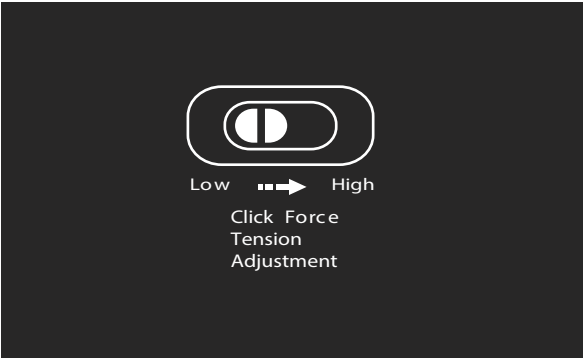
The rollerbar **A** provides two functions:

- Pressing down on the rollerbar performs a left click.
- Moving the rollerbar from side to side and up and down performs cursor movement.



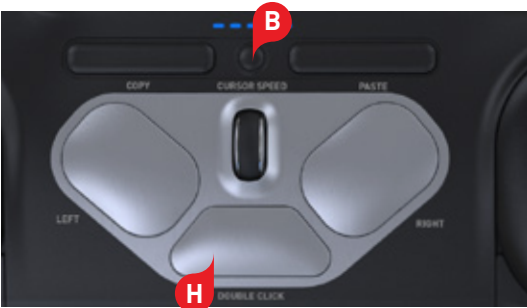
Click force tension adjustment

You can adjust the amount of pressure required to perform a mouse click. Use the click-force tension slider located under your RollerMouse Pro3. Simply slide it until you find the tension that works best for you.



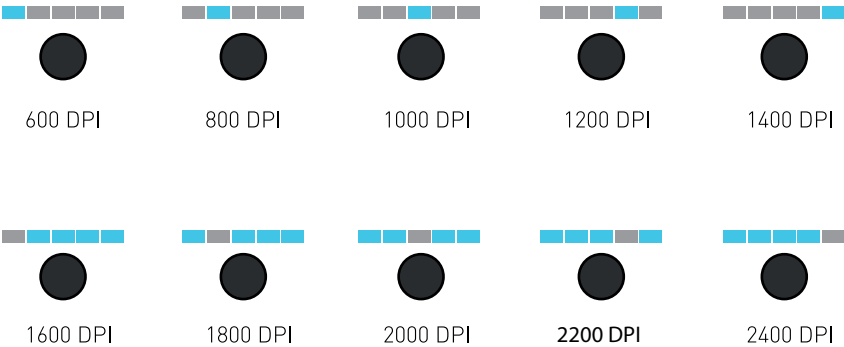
Changing the 'Double' click button to middle

To change button **H** from a double click function to a middle button function, hold buttons **B** and **H** for two seconds until LED lights flashes to confirm. Repeating this process will revert back to double click function.



Change cursor speed

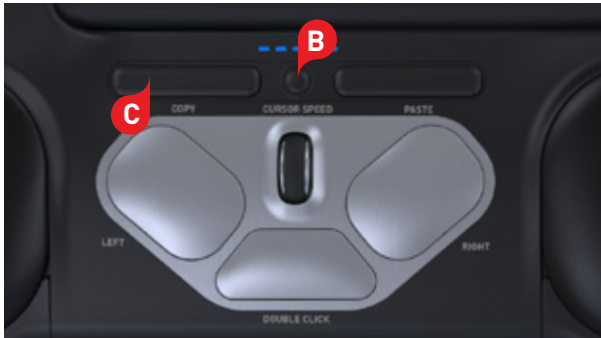
Press button **B** to change cursor speed. There are ten speed selections which range from slow (600 DPI) to fast (2400 DPI). Speed can be identified by the LED lights as shown.



User settings

RollerMouse Pro3 has 3 modes. PC- mode, Mac-mode and HID-mode (For Linux). Use the following key commands to switch settings to best fit your operating system.

- Press and hold the **B** and **C** buttons simultaneously for two seconds to see the LED lights flash for the respective mode.
- While holding the **B** button, release the **C** button and click on the **C** button to toggle though the different modes.
- Release both buttons once the desired mode has been reached.



Different mode settings

PC-Mode	LED's light up from left to right.	Windows
MAC-Mode	LED's light up from right to left.	OS
HID-Mode	LED's light up from both sides towards the middle.	Linux

Get in touch

Keyboard Specialists Ltd

Unit 44-45, Darlaston Central

Trading Estate

Salisbury Street

Wednesbury

West Midlands

WS10 8XB

United Kingdom

Tel: +44 (0) 20 3474 0234

Fax: +44 (0) 20 3474 0235

Tested to comply with FCC
and IC standards.



FCC Statement

Changes or modifications not expressly approved by the party responsible for compliance could void the user's authority to operate the equipment.

This equipment has been tested and found to comply with the limits for a Class B digital device, pursuant to Part 15 of the FCC Rules. These limits are designed to provide reasonable protection against harmful interference in a residential installation. This equipment generates uses and can radiate radio frequency energy and, if not installed and used in accordance with the instructions, may cause harmful interference to radio communications. However, there is no guarantee that interference will not occur in a particular installation. If this equipment does cause harmful interference to radio or television reception, which can be determined by turning the equipment off and on, the user is encouraged to try to correct the interference by one or more of the following measures:

- Reorient or relocate the receiving antenna.
- Increase the separation between the equipment and receiver.
- Connect the equipment into an outlet on a circuit different from that to which the receiver is connected.
- Consult the dealer or an experienced radio/TV technician for help.

This device complies with part 15 of the FCC rules. Operation is subject to the following two conditions (1) this device may not cause harmful interference, and (2) this device must accept any interference received, including interference that may cause undesired operation.

IC Statement

This device complies with Industry Canada's licence-exempt RSSs. Operation is subject to the following two conditions:

- (1) This device may not cause interference; and
- (2) This device must accept any interference, including interference that may cause undesired operation of the device.

The term "IC:" before the certification/registration number only signifies that the Industry Canada technical specifications were met. This product meets the applicable Industry Canada technical specifications.

Le présent appareil est conforme aux CNR d'Industrie Canada applicable aux appareils radio exempts de licence. L'exploitation est autorisée aux deux conditions suivantes : (1) l'appareil ne doit pas produire de brouillage, et (2) l'utilisateur de l'appareil doit accepter tout brouillage radioélectrique subi, même si le brouillage est susceptible d'en compromettre le fonctionnement

Warranty

If there is a functional defect due to faulty manufacturing, we will replace the product. This warranty does not cover damage that results from misuse of the product.

Attention!

If you attempt to dismantle your RollerMouse, you will invalidate your warranty.

KBS

Keyboard
Specialists

contour